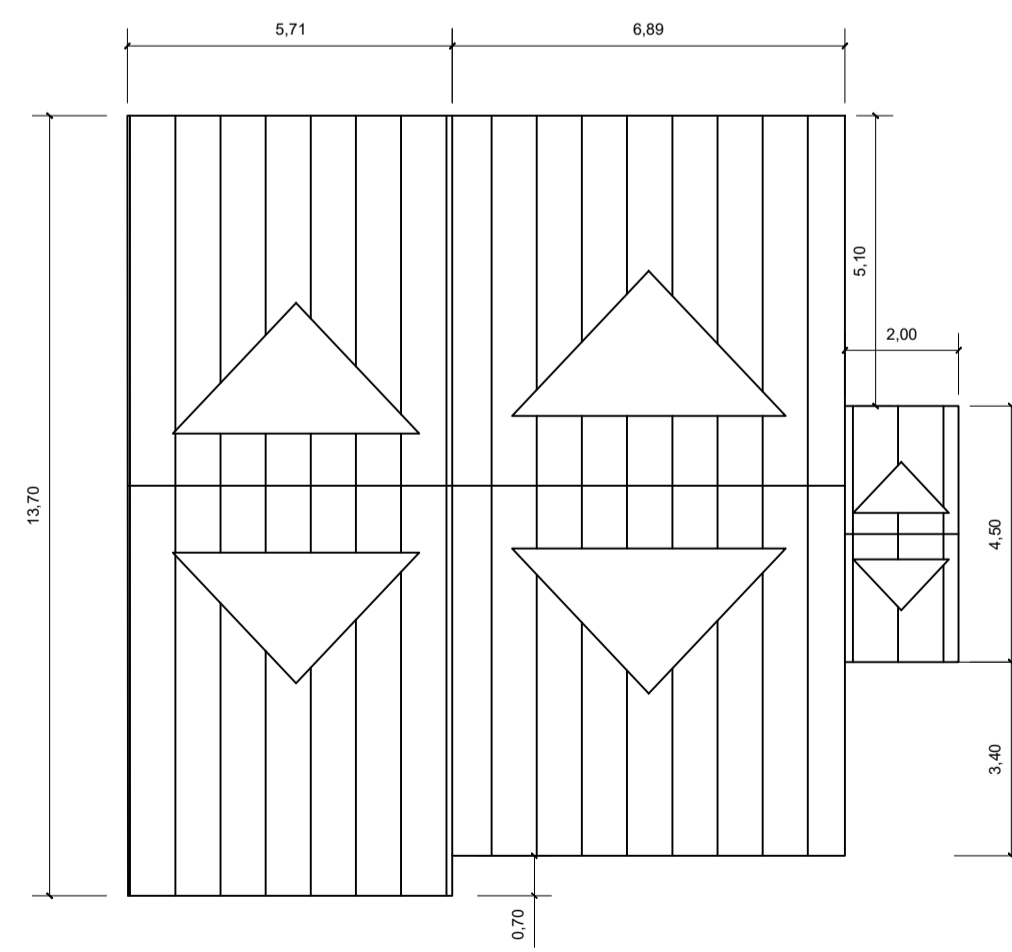
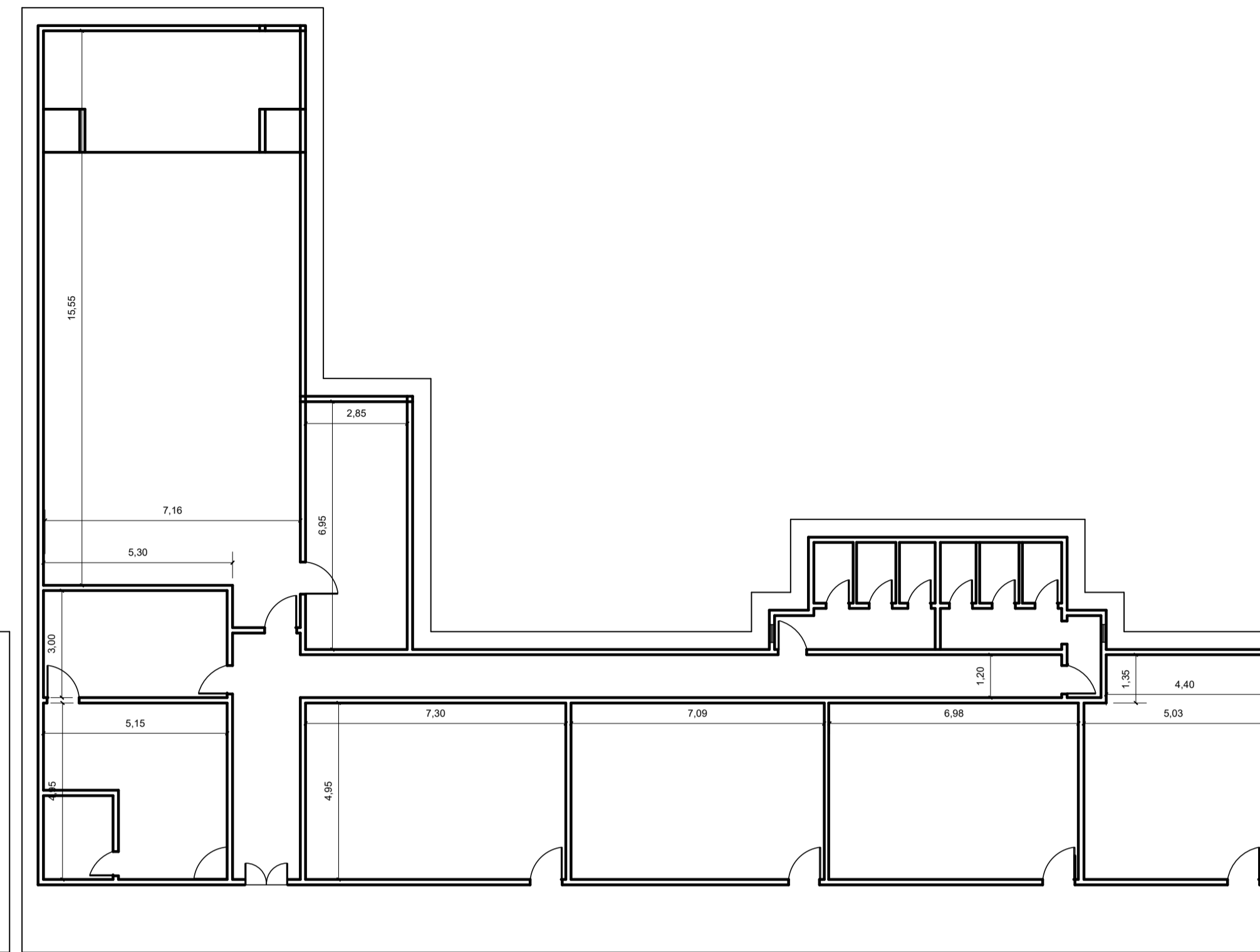
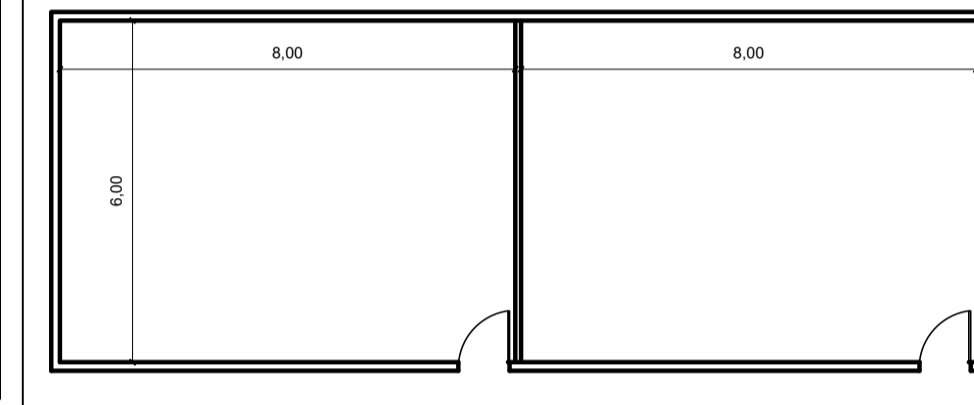
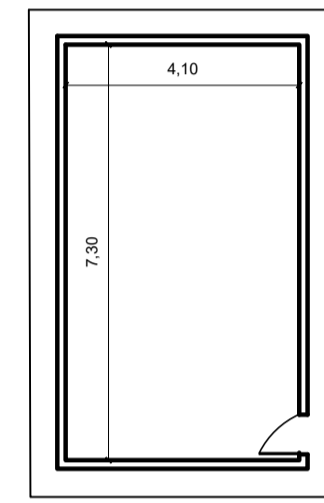
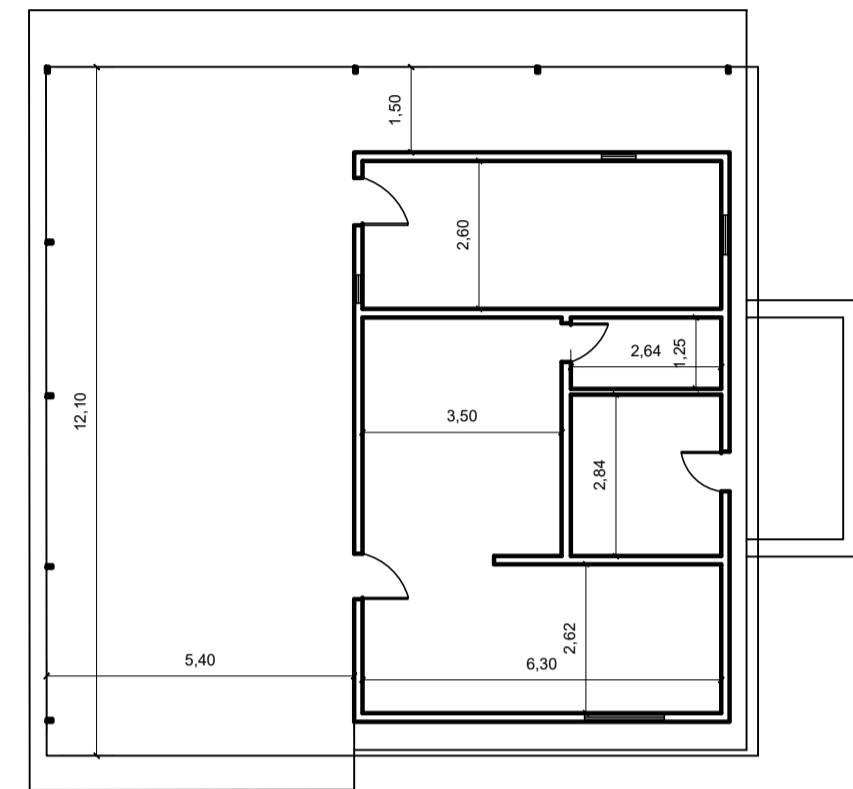
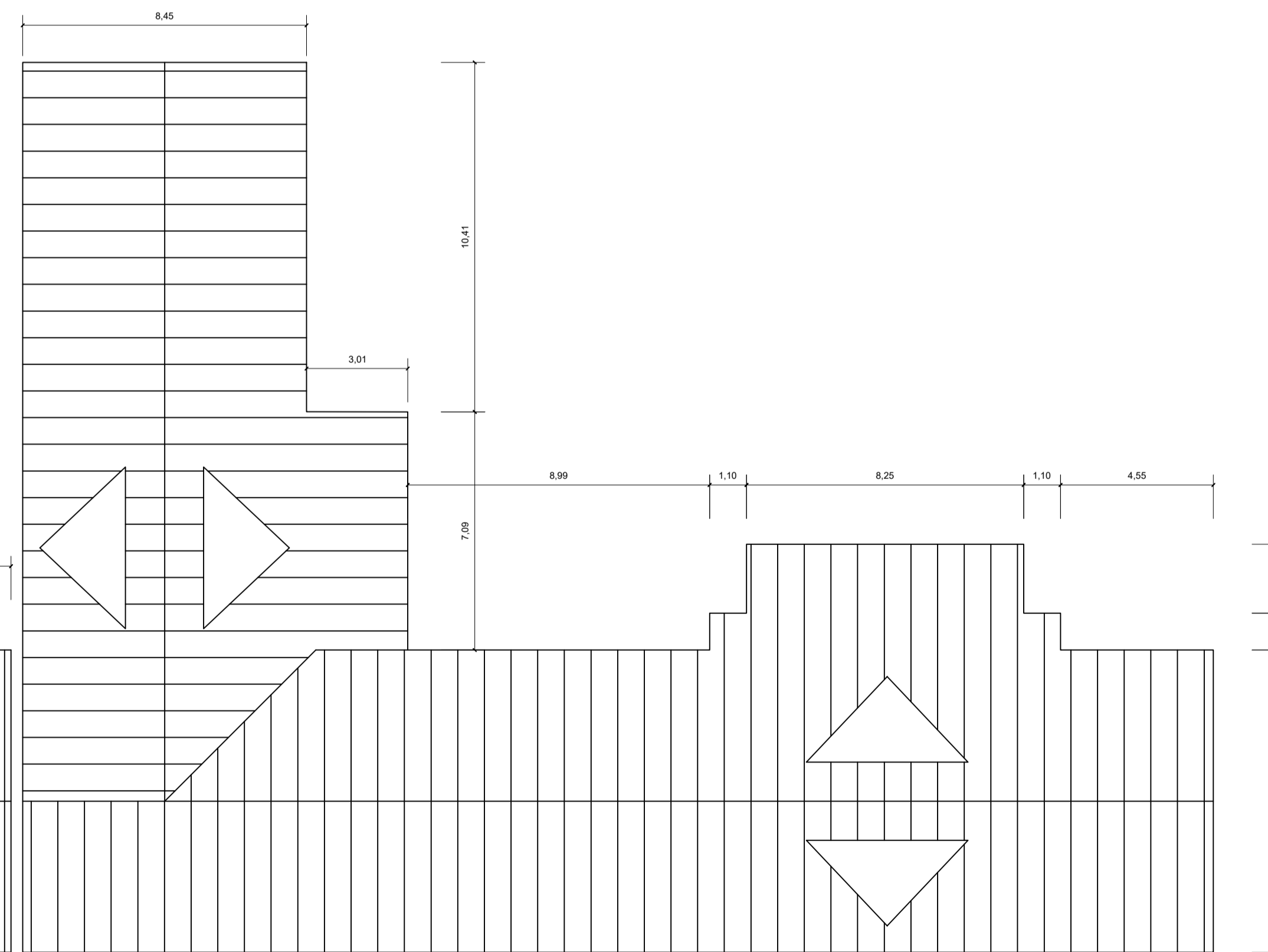
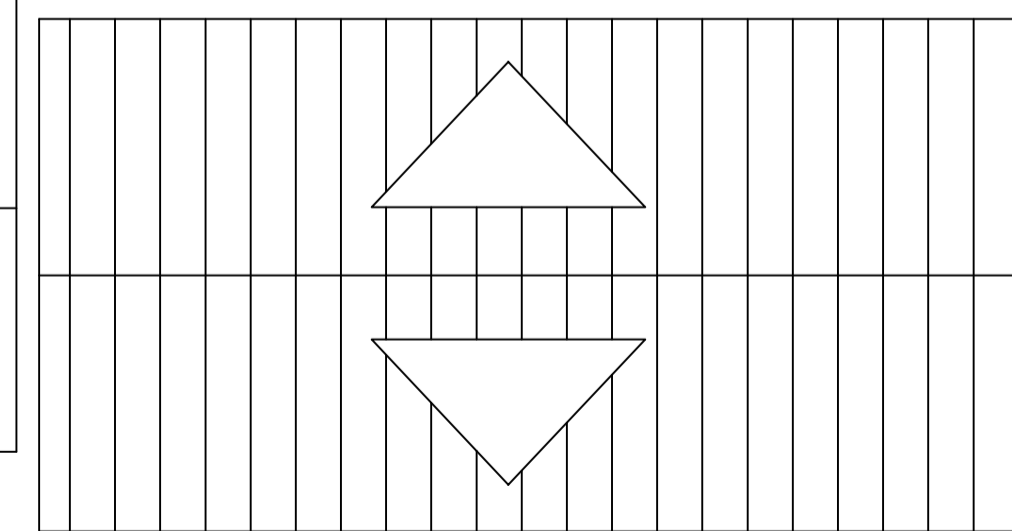
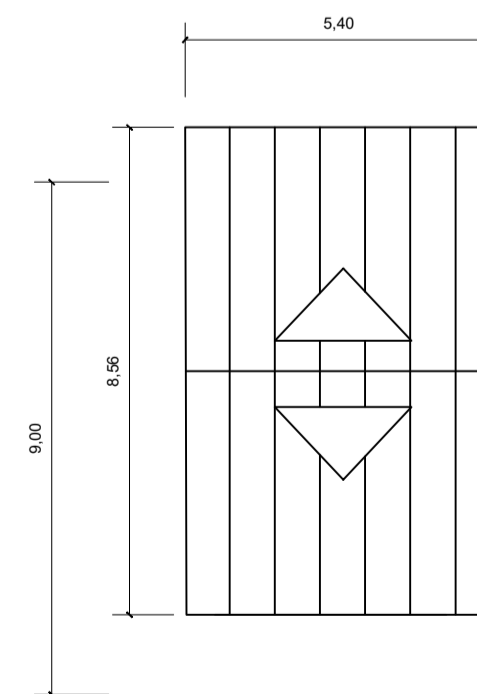


PLANTA BAIXA ATUAL
ESCALA: 1/125



PLANTA DE COBERTURA - ATUAL
ESCALA: 1/125



STATUS CONSULTORIA E GESTÃO DE PROJETOS	
PREFEITURA MUNICIPAL DE SANTA ISABEL DO PARÁ	
OBRA:	REFORMA E AMPLIAÇÃO
PRONCHA:	01
PROJETO:	E.M.E.F FRANCISCA FELIX
ARQUITETURA:	PLANTA BAIXA E PLANTA DE COBERTURA - ATUAL
DATA:	JANEIRO/2018
ESCALA:	1/125
LOCAL:	SANTA ISABEL DO PARÁ

PROIBIDA A REPRODUÇÃO TOTAL OU PARCIAL SEM AUTORIZAÇÃO DOS AUTORES. (LEI Nº988 DE 1973)