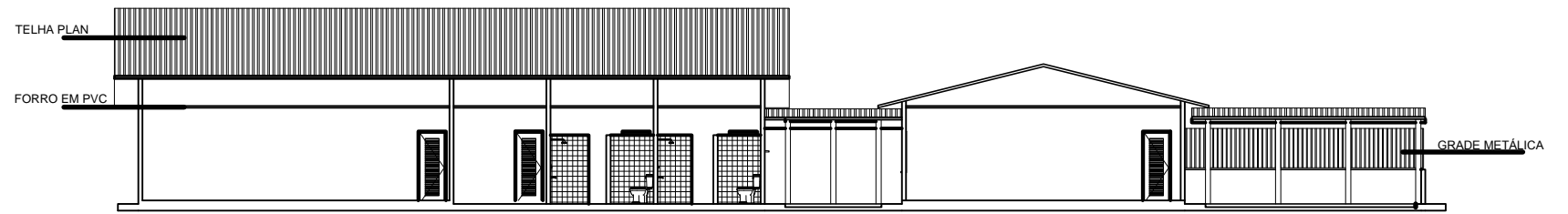


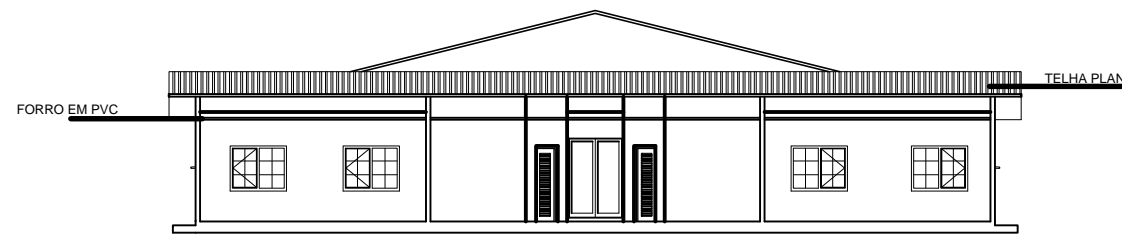
Fachada Frontal

esc 1/50



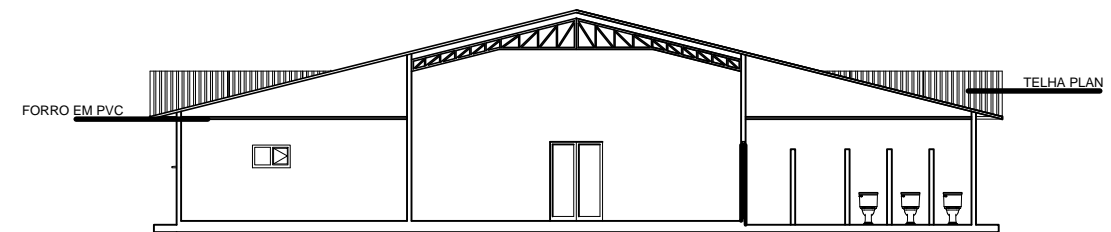
Corte AA'

esc 1/50



Corte BB'

esc 1/50



Corte CC'

esc 1/50

STATUS CONSULTORIA E GESTÃO DE PROJETOS	
PREFEITURA MUNICIPAL DE SANTA IZABEL DO PARÁ	
OBRA: REFORMA DA ESCOLA N.sra PERPÉTUO SOCORRO	PRANCHA
PROJETO: ARQUITETÔNICO- CORTES; FACHADA	02
01 JANEIRO 2018	02 SANTA IZABEL DO PARÁ