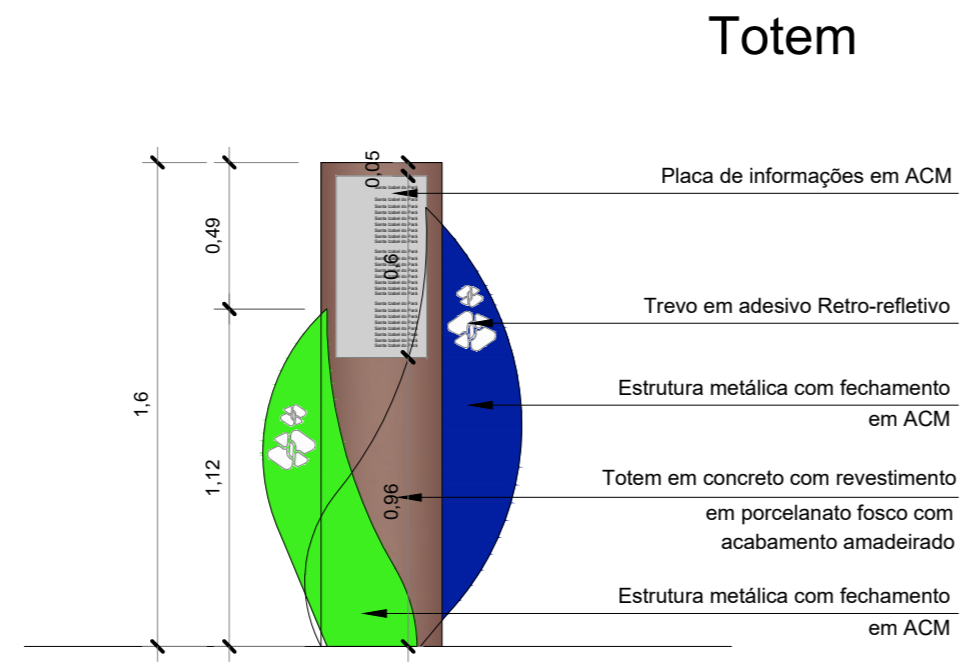
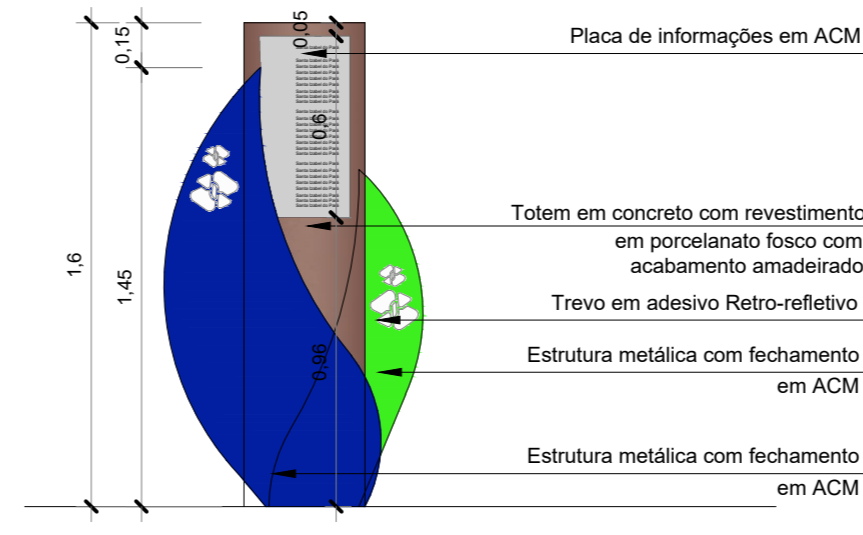


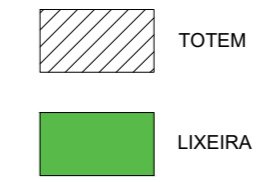
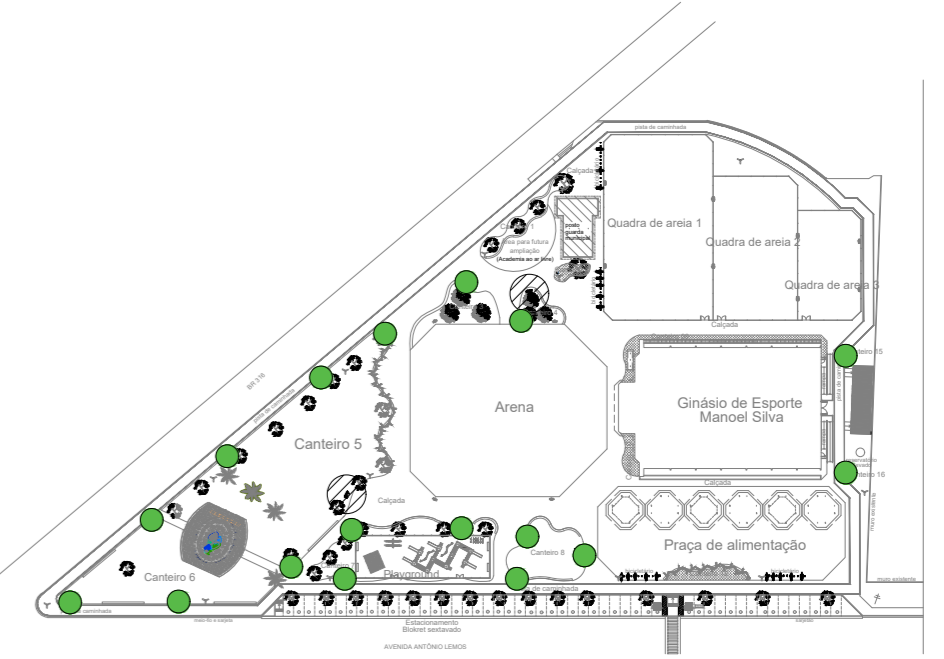
Planta Baixa
Escala 1/25



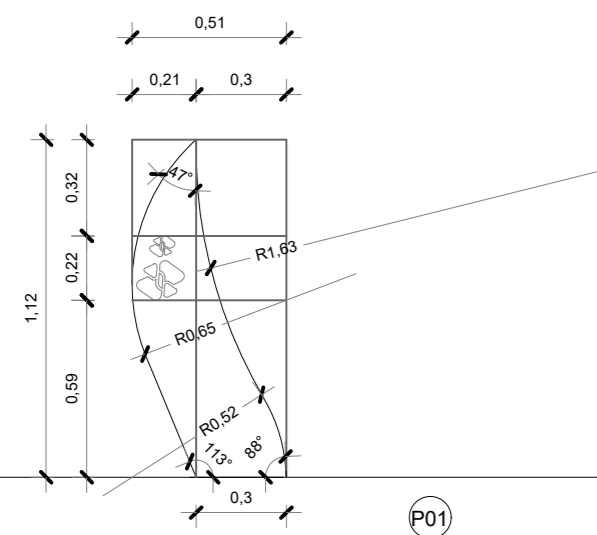
Vista 1
Escala 1/25



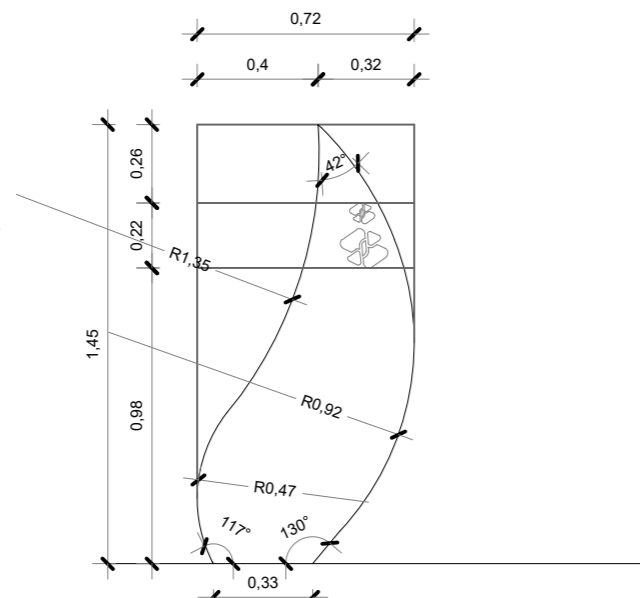
Vista 2
Escala 1/25



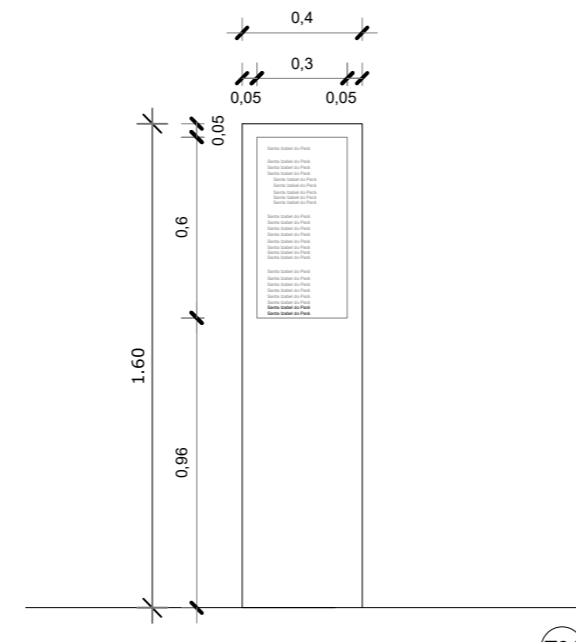
Croqui de Referência
S/Escala



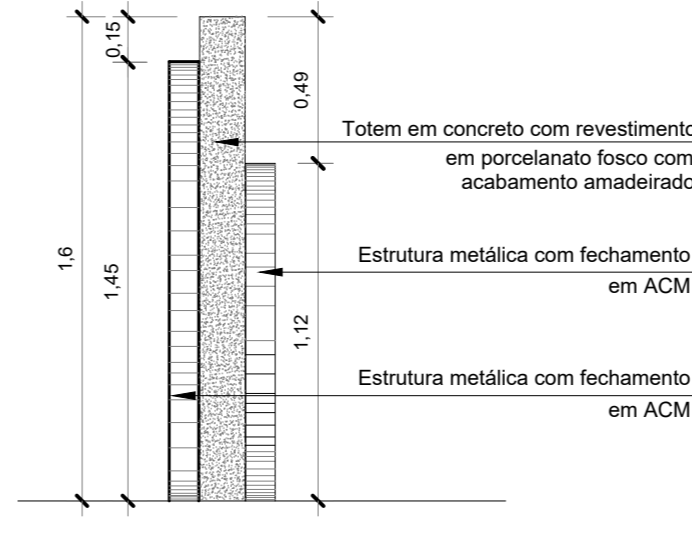
Vista da Pétala 01
Escala 1/25



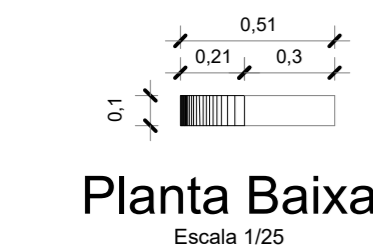
Vista da Pétala 02
Escala 1/25



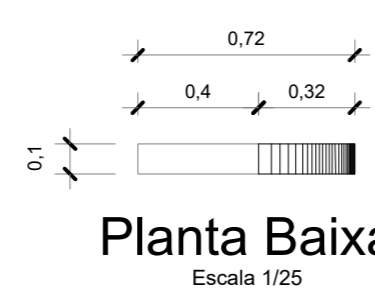
Vista do Totem
Escala 1/25



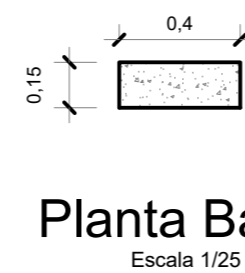
Vista 3
Escala 1/25



Planta Baixa
Escala 1/25



Planta Baixa
Escala 1/25



Planta Baixa
Escala 1/25



Vista da Placa
Escala 1/25

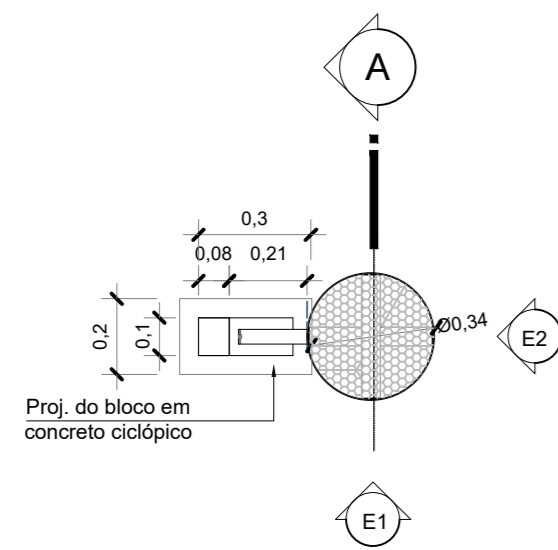
CARIMBOS:

PROPRIETÁRIO:

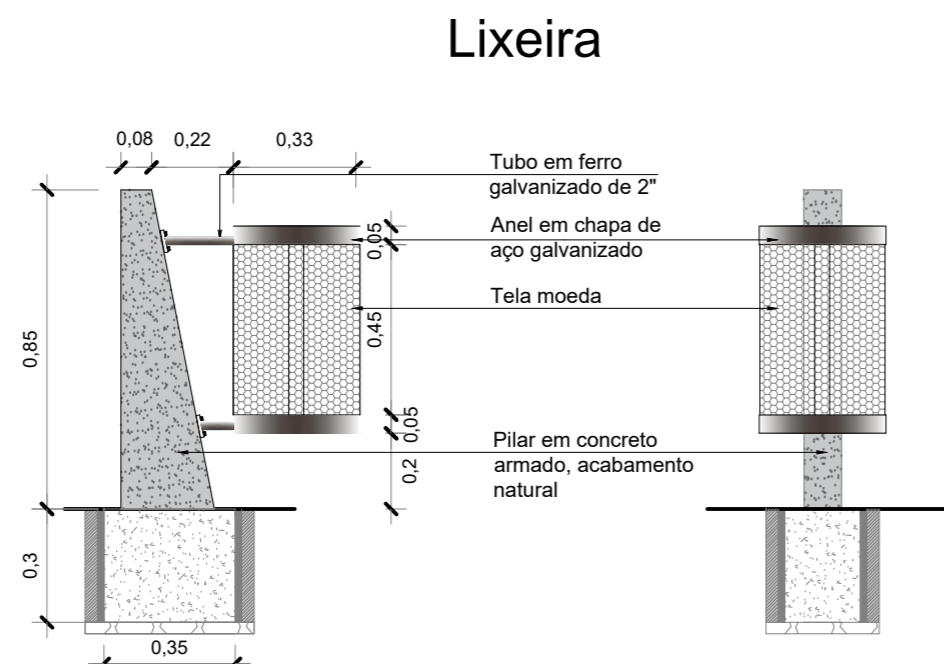
PREFEITURA MUNICIPAL DE SANTA IZABEL DO PARÁ/PA

PROJETO:

ARQ^ª MARUZA BAPTISTA - CAU: 28510-2/PA
Arquiteta
CAU - A 28510-2

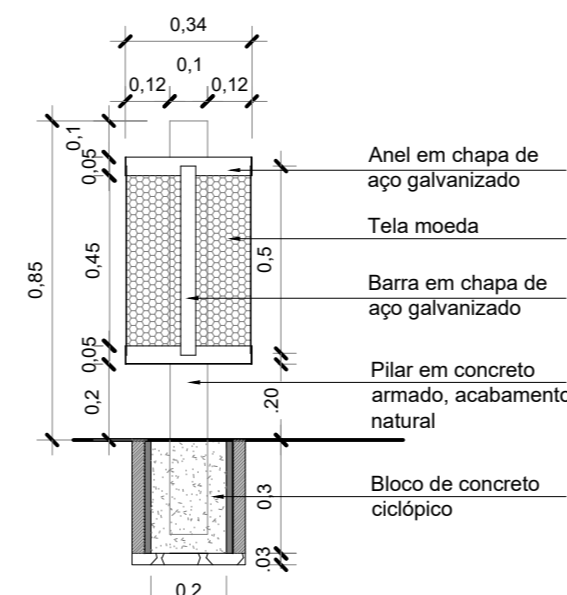


Planta Baixa
Escala 1/20



Elevação 1
Escala 1/20

Elevação 2
Escala 1/20



Corte A
Escala 1/20



MARUZA BAPTISTA
ARQUITETURA E URBANISMO

f.: 91 * 984459487
/ 91 * 33550070 / 0080
E-MAIL: maruzabap@gmail.com



PREFEITURA MUNICIPAL
DE SANTA IZABEL DO PARÁ

ASSUNTO: REFORMA DO COMPLEXO ESPORTIVO
MANOEL SILVA, NO MUNICÍPIO DE SANTA IZABEL DO PARÁ

DATA:

JUNHO/2022

LOCAL: BR 316 ENTRE AVENIDA ANTÔNIO
LEMOES - BAIRRO ARATANHA
SANTA IZABEL DO PARÁ/PA

ESCALA:

INDICADA

CONTEÚDO: TOTEM: PLANTA BAIXA / VISTAS / DETALHES
LIXEIRA: PLANTA BAIXA / ELEV. 1 / ELEV. 2 / CORTE A

DESENHO CAD:

MNB AMORAS

FRANCHA:

ARQ

33/40